

## MP 79, MP 79T Stainless Steel Square Beam Load Cell



227 kg ... 5,099 kg

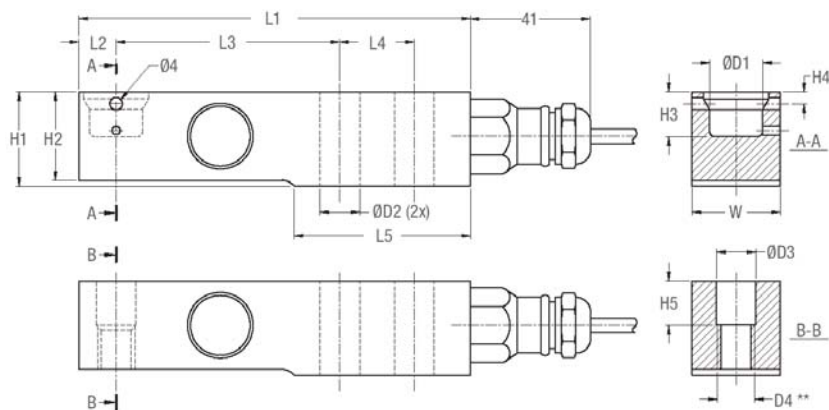
- Full stainless steel construction
- Compatible with other sources
- Hermetically welded seal (IP68, IP69K)
- Matched output
- Approved according to OIML R60
- Ex version available

### Applications

- Platform scales
- Tank and hopper scales

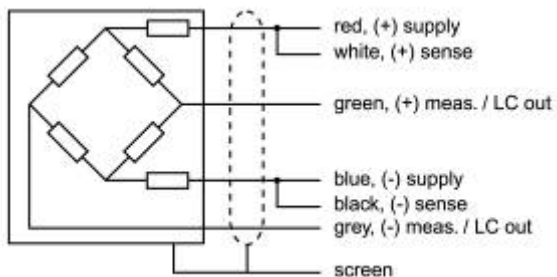
Technical Data	C3MR		
Accuracy class (Combined error)		0.020	% C <sub>n</sub>
Maximum capacity	E <sub>max</sub>	227 / 454 / 1,134 / 2,268 / 5,099	kg
Maximum usable load	E <sub>u</sub>	200	% E <sub>max</sub>
Destructive load	E <sub>d</sub>	≥ 300	% E <sub>max</sub>
Safe side load	E <sub>lq</sub>	100	% E <sub>max</sub>
Maximum number of LC intervals	n <sub>LC</sub>	3,000	
Minimum LC verification interval v <sub>min</sub> = E <sub>max</sub> /Y	Y	11,500 11,000 (E <sub>max</sub> =5,099kg)	
Rated output	C <sub>n</sub>	2.0	mV/V
Tolerance on rated output	D <sub>c</sub>	≤ ± 0.1	% C <sub>n</sub>
Zero output signal	S <sub>min</sub>	≤ ± 5.0	% C <sub>n</sub>
Creep. during 30 min.	d <sub>cr</sub>	≤ ± 0.0166	% C <sub>n</sub>
Temperature effect on S <sub>min</sub>	TK <sub>Smin</sub>	≤ ± 0.0122 ≤ ± 0.0127 (E <sub>max</sub> =5,099kg)	% C <sub>n</sub> / 10K
Temperature effect on C	TK <sub>C</sub>	≤ ± 0,010	% C <sub>n</sub> / 10K
Input impedance	R <sub>LC</sub>	1,100 ± 50	Ω
Output impedance	R <sub>O</sub>	1,000 ± 2	Ω
Insulation impedance (100V DC)	R <sub>IS</sub>	≥ 5	GΩ
Recommended supply voltage	B <sub>u</sub>	5 ... 15	V
Nominal ambient temperature range	B <sub>T</sub>	- 10 ... + 40	°C
Usable ambient temperature range	B <sub>Tu</sub>	- 40 ... + 80	°C
Nominal deflection	S <sub>nom</sub>	0.21(E <sub>max</sub> =227kg); 0.24(E <sub>max</sub> =454kg); 0.32(E <sub>max</sub> =1,134kg) ; 0.47(E <sub>max</sub> =2,268kg); 0.80 (E <sub>max</sub> =5,099kg)	mm
Cable length		5.0 (other lengths optional)	m
Cable type		6 conductor TPE cable (AWG 26). shield grounded (optional: shield floating)	
Sensor material		Stainless Steel 17-4PH (1.4548)	
Protection class (acc. to IEC 529 resp. DIN 40050)		IP68, IP69K	

The technical data given here serve only as a product description and must not be interpreted as guaranteed characteristics in legal sense.



Capacity	L1	L2	L3	L4	L5	H1	H2	H3	H4	H5	W	D1	D2	D3	D4
227kg; 454kg	133.4	12.7	76.2	25.4	60.0	31.0	28.8	15.0	4.0	15.0	30.0	18.0	13.0	13.5	M12
1,134kg; 2,268kg	133.4	12.7	76.2	25.4	60.0	31.0	30.5	15.0	4.0	15.0	30.0	18.0	13.0	13.5	M12
5,099 kg	190.0	21.0	105	40.0	93.0	49.0	41.0	20.5	8.0	20.5	43.0	25.0	21.0	21.5	M20

Dimensions in mm



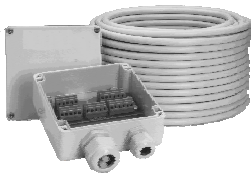
Wiring diagram

### Order information

Type	Order number	Type	Order number
MP 79/ 227 kg C3MR	9408 279 07120	MP 79/ 227 kg C3MR E	9408 679 07120
MP 79/ 454 kg C3MR	9408 279 07150	MP 79/ 454 kg C3MR E	9408 679 07150
MP 79/ 1,134 kg C3MR	9408 279 07210	MP 79/ 1,134 kg C3MR E	9408 679 07210
MP 79/ 2,268 kg C3MR	9408 279 07220	MP 79/ 2,268 kg C3MR E	9408 679 07220
MP 79/ 5,099 kg C3MR	9408 279 07250	MP 79/ 5,099 kg C3MR E	9408 679 07250
MP 79T/ 227 kg C3MR	9408 279 17120	MP 79T/ 227 kg C3MR E	9408 679 17120
MP 79T/ 454 kg C3MR	9408 279 17150	MP 79T/ 454 kg C3MR E	9408 679 17150
MP 79T/ 1,134 kg C3MR	9408 279 17210	MP 79T/ 1,134 kg C3MR E	9408 679 17210
MP 79T/ 2,268 kg C3MR	9408 279 17220	MP 79T/ 2,268 kg C3MR E	9408 679 17220
MP 79T/ 5,099 kg C3MR	9408 279 17250	MP 79T/ 5,099 kg C3MR E	9408 679 17250

## Accessories

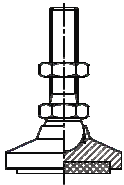
### MP 80/ MP 90 – Cables and cable junction boxes



- MP80 Installation cable
- Temperature range: -20°C ... +80°C
  - Material: PVC
  - 6-wire cable
- MP90 Cable junction box
- Temperature range: -20°C ... +70°C
  - Material: ABS
  - Protection class: IP65

MP 80/ 31	Meteor installation cable 30m	9408 800 80311
MP 80/ 51	Meteor installation cable 50m	9408 800 80511
MP 80/ 12	Meteor installation cable 100m	9408 800 80121
MP 80/ 32	Meteor installation cable 300m	9408 800 80321
MP 80/ 80	Grounding cable	9408 800 80801
MP 90/ 04	Cable junction box for up to 4 load cells	9408 800 90041
MP 90/ 06	Cable junction box for up to 4 load cells (6-wire)	9408 800 90061

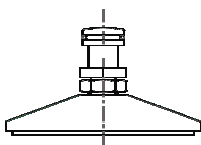
### Platform foot for MP 58 and MP 79



- Mounting solution for weighing platforms
- Height adjustable
  - N-version: 4mm;
  - S-version: 6mm
- Temperature range: -20°C ... +65°C
- S-versions suitable for food industry
- Material:
  - N-version: mild steel, zinc plated
  - S-version: stainless steel 1.4301

MP 91/ 00 N	Platform foot for MP 58 and MP 79 until 2,268kg (M12)	9408 800 90041
MP 91/ 00 S	Platform foot for MP 58 and MP 79 until 2,268kg, stainless steel (M12)	9408 800 91001
MP 91/ 01 N	Platform foot for MP 79/ 5,099kg (M20)	9408 800 91002
MP 91/ 01 S	Platform foot for MP 79/ 5,099kg, stainless steel (M20)	9408 800 91012

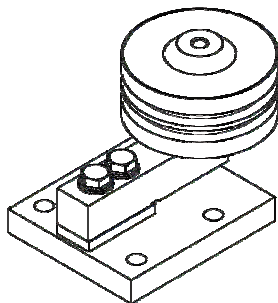
### Platform foot for MP 58T and MP 79T



- Mounting solution for weighing platforms
- Height adjustable 6mm
- Temperature range: -20°C ... +65°C
- S-versions suitable for food industry
- Material: stainless steel 1.4301

MP 91/ 10 S	Platform foot for MP 58T and MP 79T until 2,268kg, stainless steel	9408 800 91102
MP 91/ 11 S	Platform foot for MP 79T/ 5,099kg, stainless steel	9408 800 91112

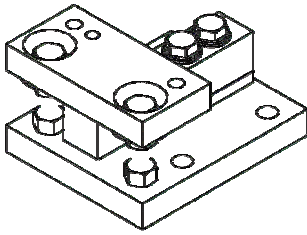
### MP 92 – Rubber Mounting Kit



- Simple mounting solution for tanks and hoppers
- Temperature range: -20°C ... +65°C
- Material: mild steel, zinc plated
- Permissible horizontal displacement: 2.5mm

MP 92/ 00 N	Mounting Kit with rubber element for MP 58 and MP 79 until 2,268kg (M12)	9408 800 92001
MP 92/ 01 N	Mounting Kit with rubber element for MP 79/ 5,099kg	9408 800 92011

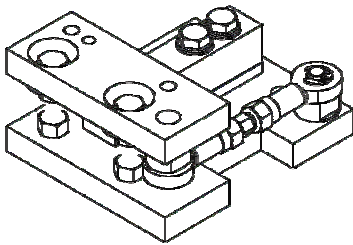
### MP 93 - Mounting Kit



- Simple mounting solution for tanks and hoppers
- Temperature range: -30 ... +80°C
- Dummy function
  - MP 93/ x0: 12KN
  - MP 93/ x1: 20KN
- Jack-up function
  - MP 93/ x0: 30KN
  - MP 93/ x1: 40KN
- Material: stainless steel 1.4301

MP 93/ 00 S	Mounting kit for MP 58 and MP 79 until 2,268kg, stainless steel	9408 800 93002
MP 93/ 01 S	Mounting kit for MP 79/ 5,099 kg, stainless steel	9408 800 93012
MP 93/ 10 S	Mounting kit for MP 58T and MP 79T until 2,268kg, stainless steel	9408 800 93102
MP 93/ 11 S	Mounting kit for MP 79T/ 5,099 kg, stainless steel	9408 800 93112

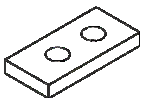
### MP 94 - Mounting Kit



- Simple mounting solution for tanks and hoppers with integrated constrictor
- Temperature range: -30 ... +80°C
- Dummy function
  - MP 94/ 10: 12KN
  - MP 94/ 11: 20KN
- Jack-up function
  - MP 94/ 10: 30KN
  - MP 94/ 11: 40KN
- Integrated Constrictor
  - MP 94/ 10: 5KN
  - MP 94/ 11: 20KN
- Material
  - N-version: mild steel, zinc plated
  - S-version: stainless steel 1.4301

MP 94/ 10 N	Mounting kit with constrictor for MP 58T and MP79T until 2,268kg	9408 800 94101
MP 94/ 10 S	Mounting kit with constrictor for MP 58T and MP 79T until 2,268kg, stainless steel	9408 800 94102
MP 94/ 11 N	Mounting kit with constrictor for MP 79T/5,099 kg	9408 800 94111
MP 94/ 11 S	Mounting kit with constrictor for MP 79T/5,099 kg, stainless steel	9408 800 94112

### MP 98 - Spacer



- Spacer for MP 58(T) and MP 79(T)
- Material: 1.4034

MP 98/ 00 N	Spacer for MP 58(T) and MP 79(T) until 2,268kg	9408 800 98001
MP 98/ 01 N	Spacer for MP 79(T)/ 5,099kg	9408 800 98011